

Autumn Bittersweet

Lampwork Glass Bead Tutorial

By Mary Lockwood

Thank you for your interest in my Bittersweet Tutorial. I hope you enjoy creating the two versions I've covered here.

This is a fun bead to make for intermediate lampworkers and a great beginners bead as well. I included instruction on how to pull stringers from frit chunks, silvered stringers and a tip on making even footprints.

Please read the entire tutorial through once before beginning to work.

Necessities and Materials

GLASS & MATERIAL

5mm rods of 104coe glass:

While I do list what glass is used for each demo, you can use any colors you like, there is no requirement for specific colors of glass.

Dark Opal Yellow
Copper Green
Opaque Wine Red
Carrot Orange
Butter Yellow
White
Medium Fossil

96 coe frit size 3

Any dark opaque brown I used 'Coffee'

EQUIPMENT & SAFETY

Standard Safe Studio Requirements including but not limited to:

Fire Extinguisher
Good Ventilation
Lampworking Safety Glasses
Propane Outside
Oxygen Tanks chained securely
Bowl of water on work surface
***You are responsible for your own safety!**

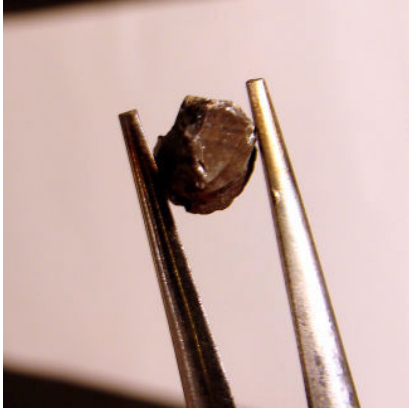
Tools and equipment:

Parallel Mashers
Graphite Marver or paddle
Tweezers/pliers
Hot Plate or Warmer
Mandrels dipped in bead release



Bittersweet 1

A warm, tab-shaped base with leaves, branches and berries.



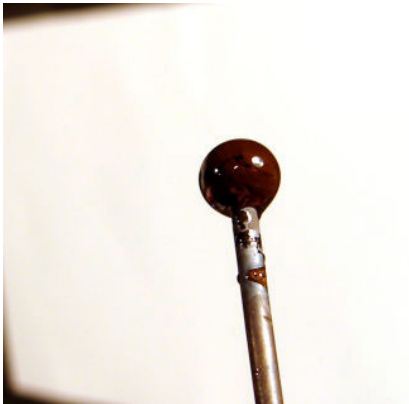
1- Pull a 1mm stringer of dark opaque brown. I use a 96coe size 3 Coffee frit. You can pull stringer from a rod instead if that is what you have. Experiment with other colors, (raku is fun). Preheat this on a hotplate.



2- Heat the tip of a clean steel mandrel to brightly glowing. Touch it to the surface of your chunk of brown frit on the hotplate.



3- The hot mandrel will stick easily to the frit. Introduce this into the flame gradually so that you don't shock it then heat thoroughly.



4- Heat this to a soft gather. If you wanted to pull a large amount of this stringer at once, you could add more frit chunks at this time to produce a larger gather.

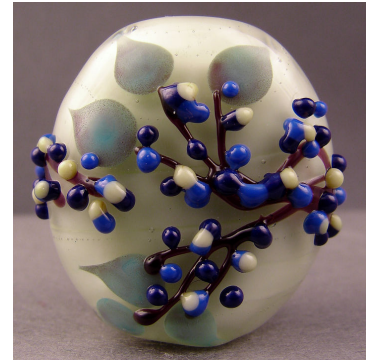


5- Grasp the tip of this gather with pliers while it is still soft and pull slowly to get a thin 1mm stringer. This will be your branches. The faster you pull, the thinner it will be.

This is a good time to pull 2mm stringers of your red, orange and butter yellow rods as well.



6- With dark opal yellow begin to lay down glass on the mandrel. You will be making a large round sphere as your base. Notice above that the glass rod is perpendicular, at a right angle, to the mandrel. If you have the glass rod tilted, it is more difficult to get a straight footprint of glass along the bead hole edge.



I want to take a moment to thank you for purchasing my Bittersweet Tutorial. I really appreciate your show of support for my work.

If you need to contact me regarding this tutorial here is the information you need:

www.marylockwood.com- my personal website

mary@marylockwood.com- this is my most often-checked email account.

I look forward to seeing what you've done with this tutorial so if you make a bead and want to share it, PLEASE do!

Thanks again!

Sincerely,

~~Mary